

# WIXOM LAKE WATERSHED MAP

ROSCOMMON, OGEMAW, CLARE, GLADWIN, ARENAC,  
ISABELLA, MIDLAND AND BAY COUNTIES

NOTE: APPROXIMATE WATERSHED AREA - 943 SQ. MILES

## LEGEND

 WATERSHED

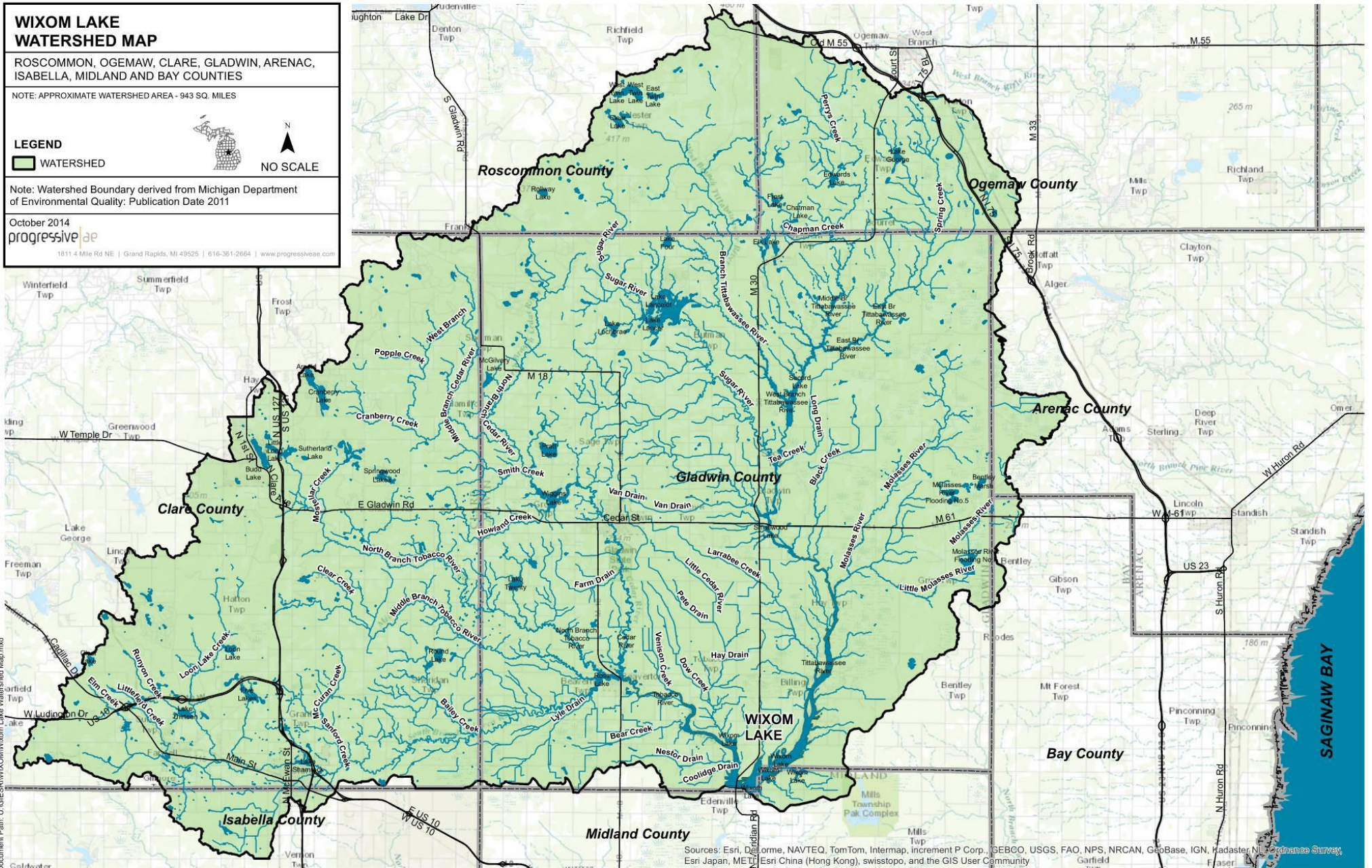


Note: Watershed Boundary derived from Michigan Department of Environmental Quality: Publication Date 2011

October 2014

progressive ae

1811 4 Mile Rd NE | Grand Rapids, MI 49525 | 616-361-2664 | www.progressiveae.com



Sources: Esri, DeLorme, NAVTEQ, TomTom, Intermap, increment P Corp., GEBCO, USGS, FAO, NPS, NRCAN, GeoBase, IGN, Kadaster NL, Ordnance Survey, Esri Japan, METI, Esri China (Hong Kong), swisstopo, and the GIS User Community

Document Path: U:\GIS\RW\WIXOM\Wixom Lake Watershed Map.mxd